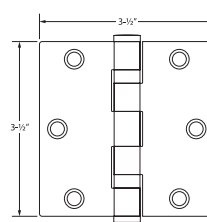




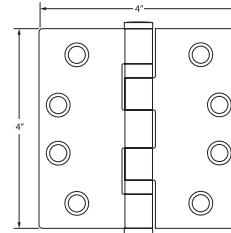
TruStile offers architectural-grade, square corner, ball bearing hinges custom built to its specifications.

Doors that are ordered pre-hung receive 4" hinges on 1-3/4" doors, while 1-3/8" doors receive 3-1/2" hinges.

4-1/2" hinges are available for 1-3/4" and 2-1/4" doors. Hinges can also be ordered for TruStile doors not pre-hung at the factory.



3-1/2" Hinge



4" Hinge

**Available Finishes**



US1D Black

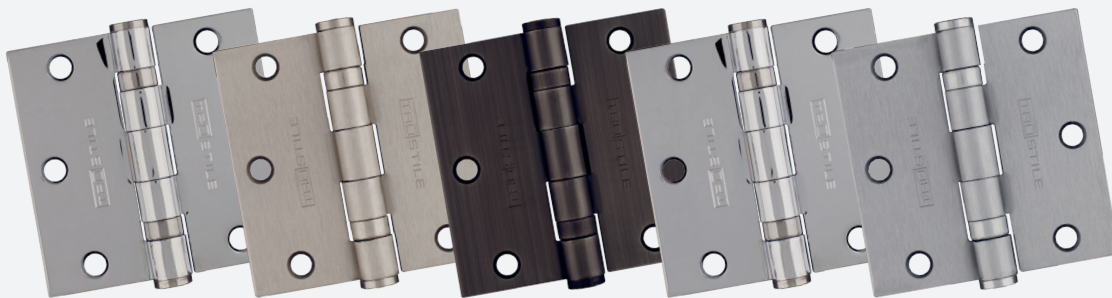
US3 Bright Brass

US4 Satin Brass

US5 Antique Brass

US10A Antique Bronze

US10B Oil-Rubbed Bronze



US15 Polished Nickel

US15 Satin Nickel

US15A Antique Nickel

US26 Polished Chrome

US26D Satin Chrome